

# MAKE YOUR OWN CHRISTMAS CARD



## YOU WILL NEED

**SOME KIND OF GLUE  
SCISSORS OR CRAFT KNIFE  
A GROWN UP**

- 1. Print onto card or paper**
- 2. Ask a grown up to cut around the edges carefully**
- 3. Glue the back of the picture and stick to the blank card**
- 4. Fold the card**





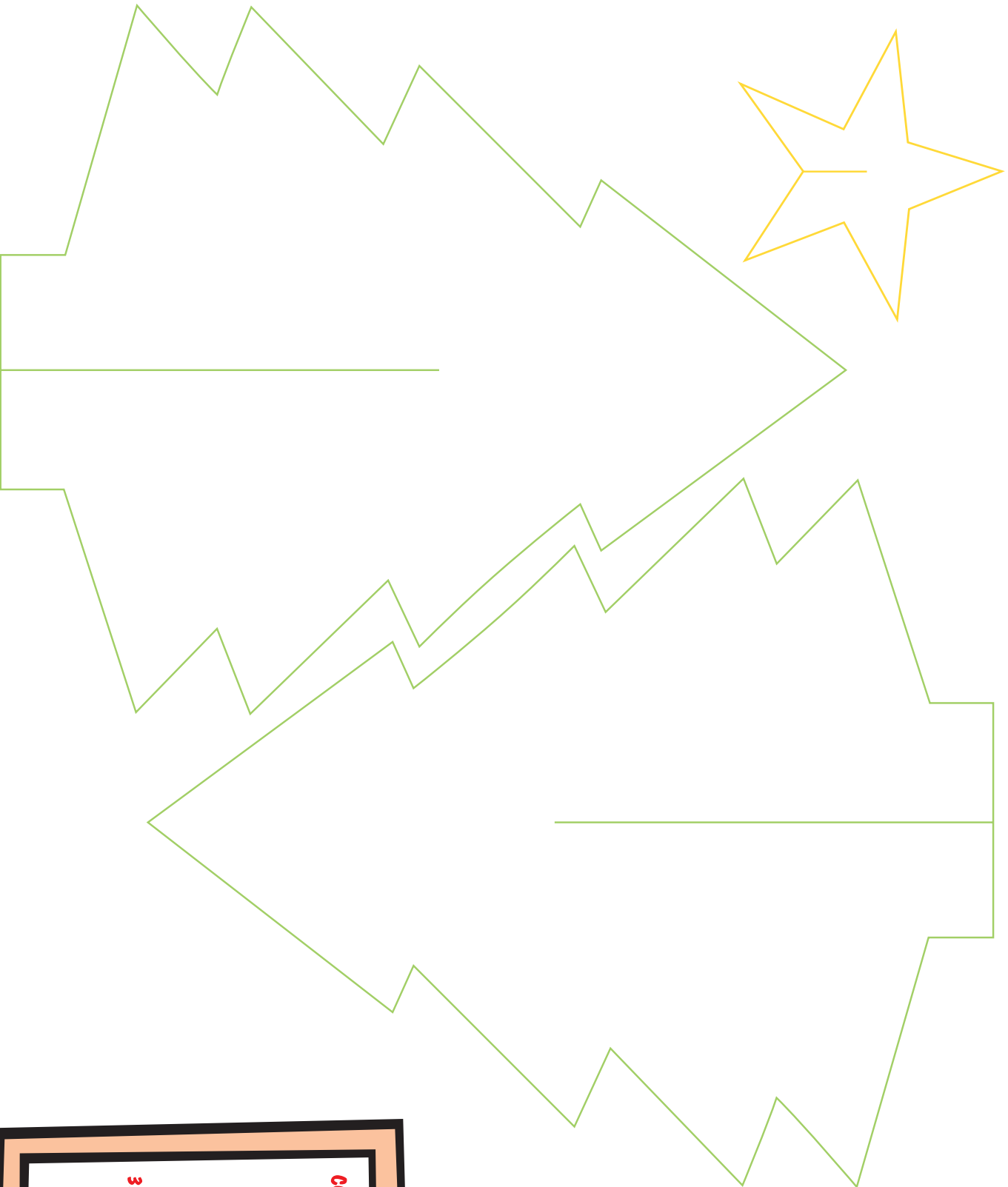
CUT ALONG HERE

FOLD ALONG THIS LINE









**YOU WILL NEED**

- COLOURING PENCILS OR PENS**
- SCISSORS OR CRAFT KNIFE**
- A GROWN UP**
- 1. Print onto card**
- 2. Colour in**
- 3. Ask a grown up to cut around the edges carefully**
- 4. Assemble tree**